

SURVEY PLAN

Prepared by	Stephens Consulting Services, P.C.
Checked by	Stephens Consulting Services, P.C.
Drawn by	Stephens Consulting Services, P.C.
Scale	AS-BUILT
Date	NOV. 18 1994
Project	NORTHPORT MARINA
Sheet	SURVEY PLAN - SIPS 1-112, 116-269 & AA, AB & AC

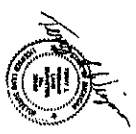
AS-BUILT NOV. 18 1994

AN EASEMENT FOR INGRESS AND EGRESS EXISTS OVER THE GENERAL EASEMENT AND UTILITY EASEMENT RECORDED IN LIBER 194, PAGE 696 AND 698. SHEETS 5 AND 6 OF THESE PLANS RECORDED IN LIBER 194, PAGES 696-697.

NOTES: SIPS 113, 114, & 115 ELIMINATED WITH 2/7/97 REVISION

SIPS AA, AB, & AC ON/PER A ADDED ON AS-BUILT PLANS

(1) - DEED MEASUREMENT
(R) - RECORDED MEASUREMENTS
(M) 100.0' - MEASUREMENTS TAKEN BY FIELD SURVEY ON NOVEMBER 18, 1994



LEGEND
 CONCRETE MONUMENT
 BOAT SLIP BOUNDARY
 EASEMENT BOUNDARY
 CENTER LINE - C

NOTES:
 1. ALL BEARINGS ARE BASED ON BEARINGS AS SHOWN ON RECORD STATE PLANS.
 2. U.S. 23 HIGHWAY BRIDGE OVER M.J. GRES RIVER. (SHEET NO. 20, FILE NO. 6-1-11)



SAGINAW BAY

SURVEY PLAN



AS-BUILT NOV. 18 1994

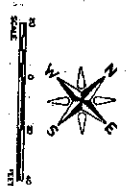
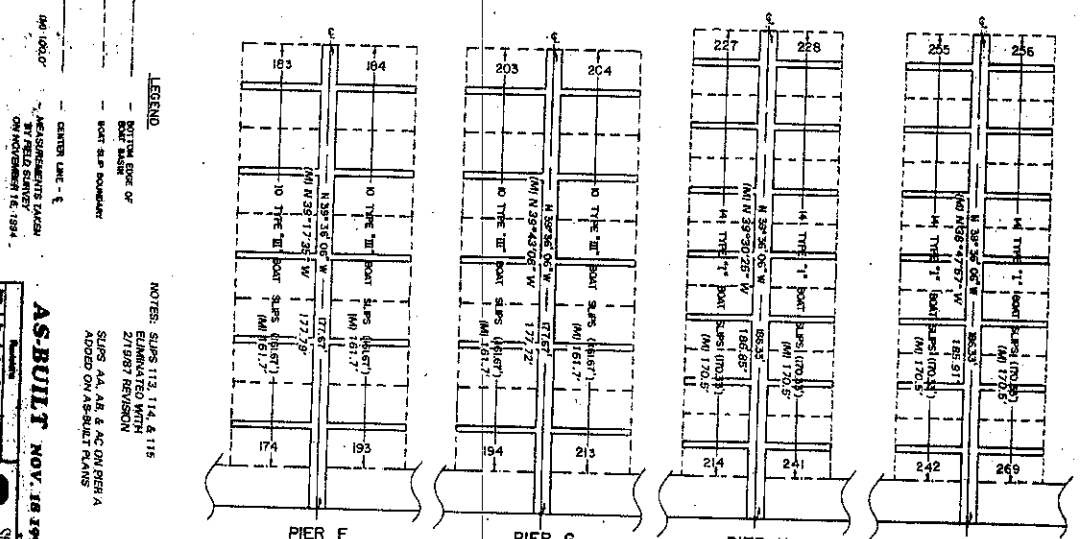
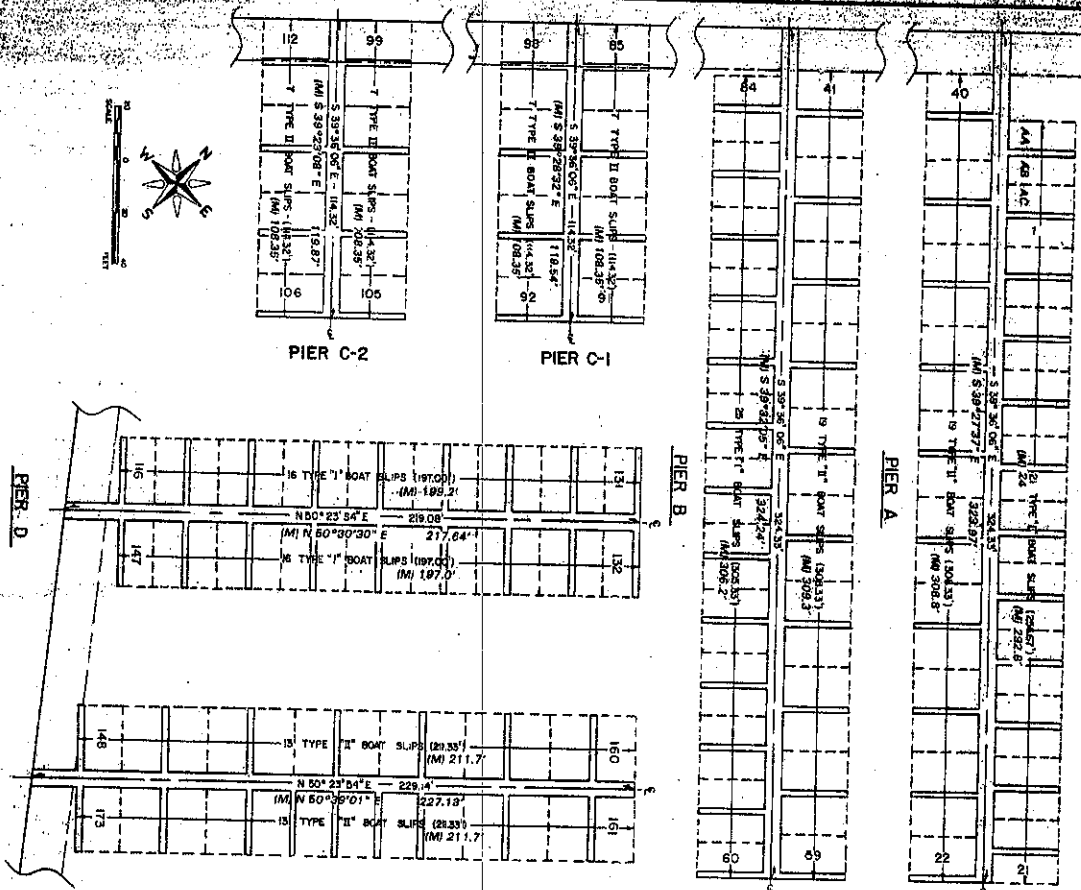
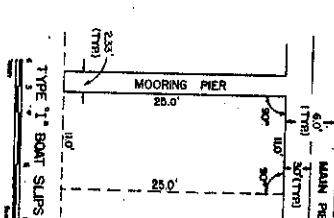
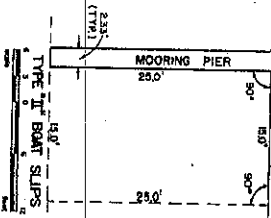
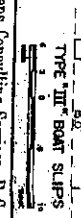
Stephens Consulting Services, P.C.
 ENGINEERING - SURVEYING - PLANNING
 159 INDIAN BLVD. 2ND FL. WILMINGTON, DE. 19801-3800
 SURVEY PLAN - SLIPS 1-112, 115-269

LEGEND

- CENTER LINE - C
- - - - - BUTTAL EDGE OF BOAT SLIP
- BOAT SLIP BOUNDARY

NOTES: SLIPS 112, 114 & 116 ELIMINATED WITH 2/7/97 REVISION

SLIPS AA, AB & AC ON PIER A ADDED ON AS-BUILT PLANS



PIER D

PIER C-2

PIER C-1

PIER B

PIER A

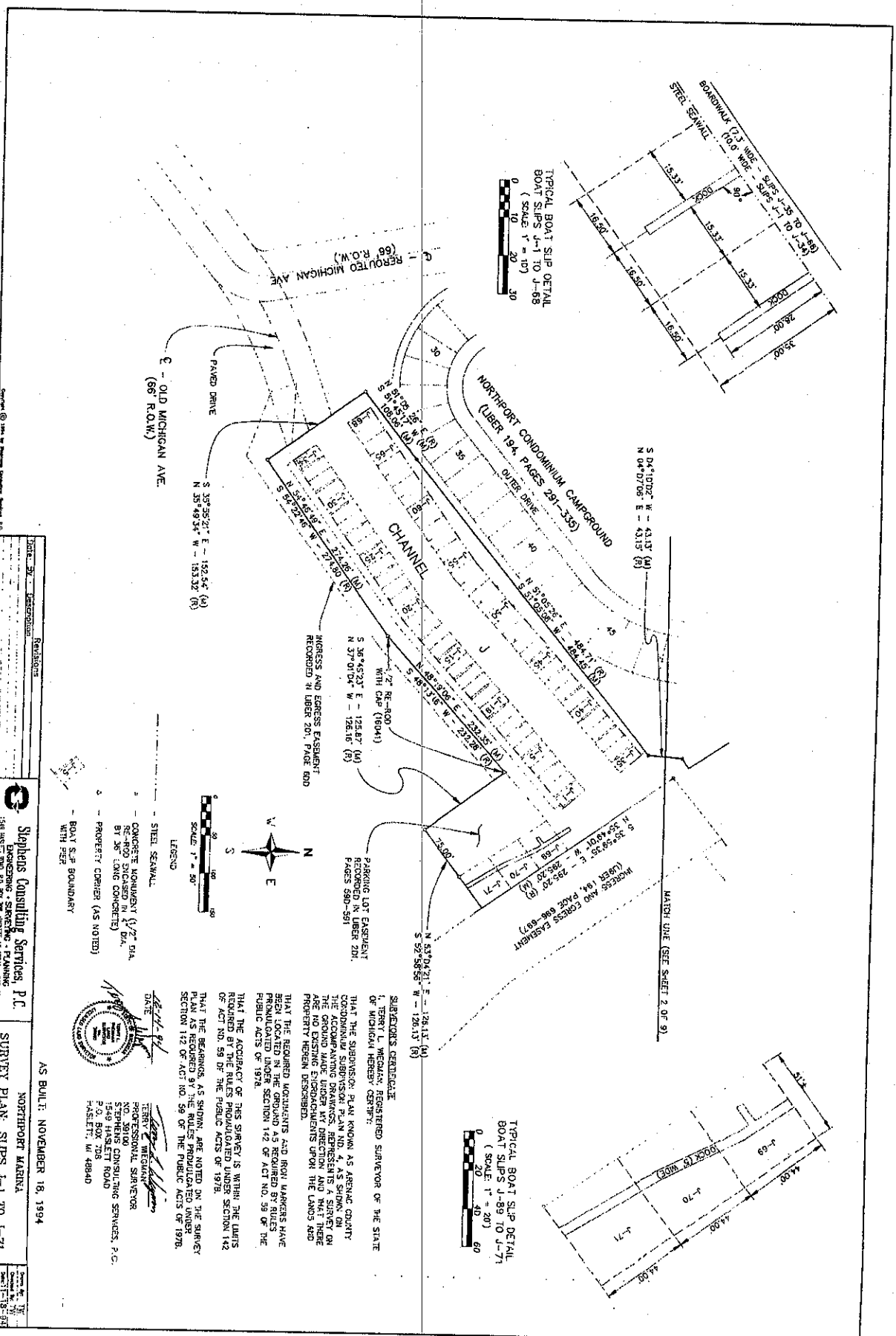
PIER E

PIER F

PIER G

PIER H

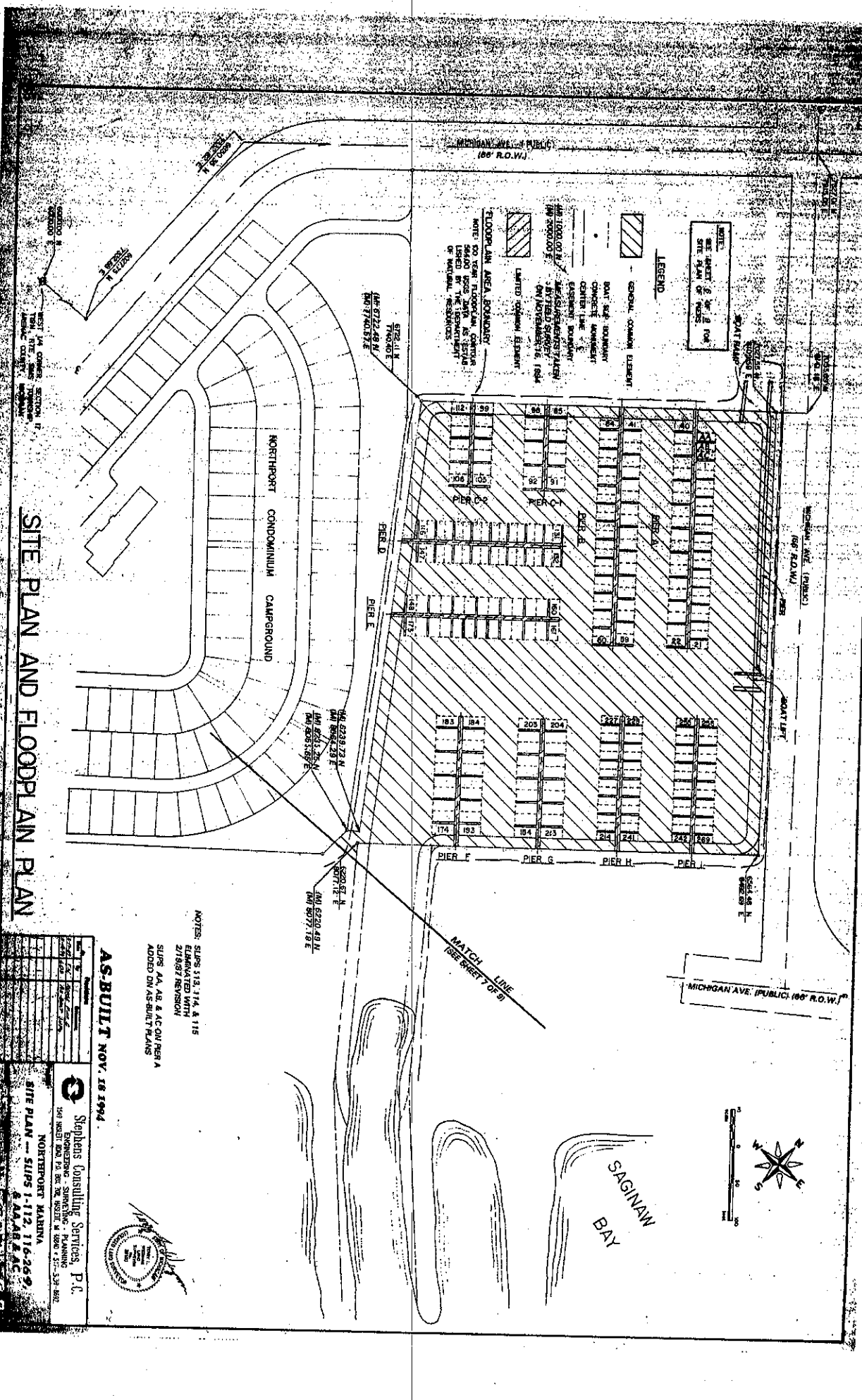
PIER I



Stephens Consulting Services, P.C.
 ENGINEERING - SURVEYING - PLANNING
 1548 HERRING ROAD, 720 BOX, THE MEADOWS, MI 48064-3130-4042
 SEC. 17, T9N, P1E, S1MS 19E, ASPENHURST CO., MI
 DATE: 11/18/94
 NORTHPORT MARINA
 SURVEY PLAN, SLIPS J-1 TO J-71
 AS BUILT, NOVEMBER 18, 1994

TERRY L. WIGGANS
 PROFESSIONAL SURVEYOR
 NO. 30110
 1549 HERRING ROAD
 P.O. BOX 728
 HASLET, MI 48840

SUBJECTOR'S CERTIFICATE
 I, TERRY L. WIGGANS, REGISTERED SURVEYOR OF THE STATE OF MICHIGAN HEREBY CERTIFY:
 THAT THE SUBMISSION PLAN KNOWN AS ASPENHURST CONDOMINIUM SURVEY AND MAP NO. 1548 HERRING ROAD, 720 BOX, THE MEADOWS, MI 48064-3130-4042, IS A TRUE AND CORRECT REPRESENTATION OF THE GROUND MADE UNDER MY DIRECTION AND THAT THERE ARE NO EXISTING ENCUMBRANCES UPON THE LANDS AND PROPERTY HEREIN DESCRIBED.
 THAT THE REQUIRED MONUMENTS AND IRON WAPERS HAVE BEEN LOCATED IN THE GROUND AS REQUIRED BY RULES PROMULGATED UNDER SECTION 142 OF ACT NO. 59 OF THE PUBLIC ACTS OF 1978.
 THAT THE ACCURACY OF THIS SURVEY IS WITHIN THE LIMITS REQUIRED BY THE RULES PROMULGATED UNDER SECTION 142 OF ACT NO. 59 OF THE PUBLIC ACTS OF 1978.
 THAT THE BEARINGS, AS SHOWN, ARE OBTAINED ON THE SURVEY PLAN AS REQUIRED BY THE RULES PROMULGATED UNDER SECTION 142 OF ACT NO. 59 OF THE PUBLIC ACTS OF 1978.



NOTE: SEE SHEET 200 OF 208 FOR SITE PLAN OF PIER 12.

LEGEND

- GENERAL COMMON ELEMENT
- BOAT SLIP BOUNDARY
- CONCRETE WALKWAY
- CHUTE
- ESSENTIAL SERVICE
- WATER SUPPLY
- WASTE REMOVAL
- AVAILABILITY OF 100' R.O.W.
- LIMITED COMMON ELEMENT

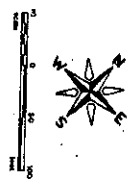
FLOODPLAIN AREA BOUNDARY
NOTE: 60 YEAR FLOODPLAIN, CONTINGENT UPON 200 YEAR FLOODPLAIN, CONTINGENT UPON THE REPERMITS OF NATIONAL RESOURCES

SITE PLAN AND FLOODPLAIN PLAN

AS-BUILT NOV. 18 1994

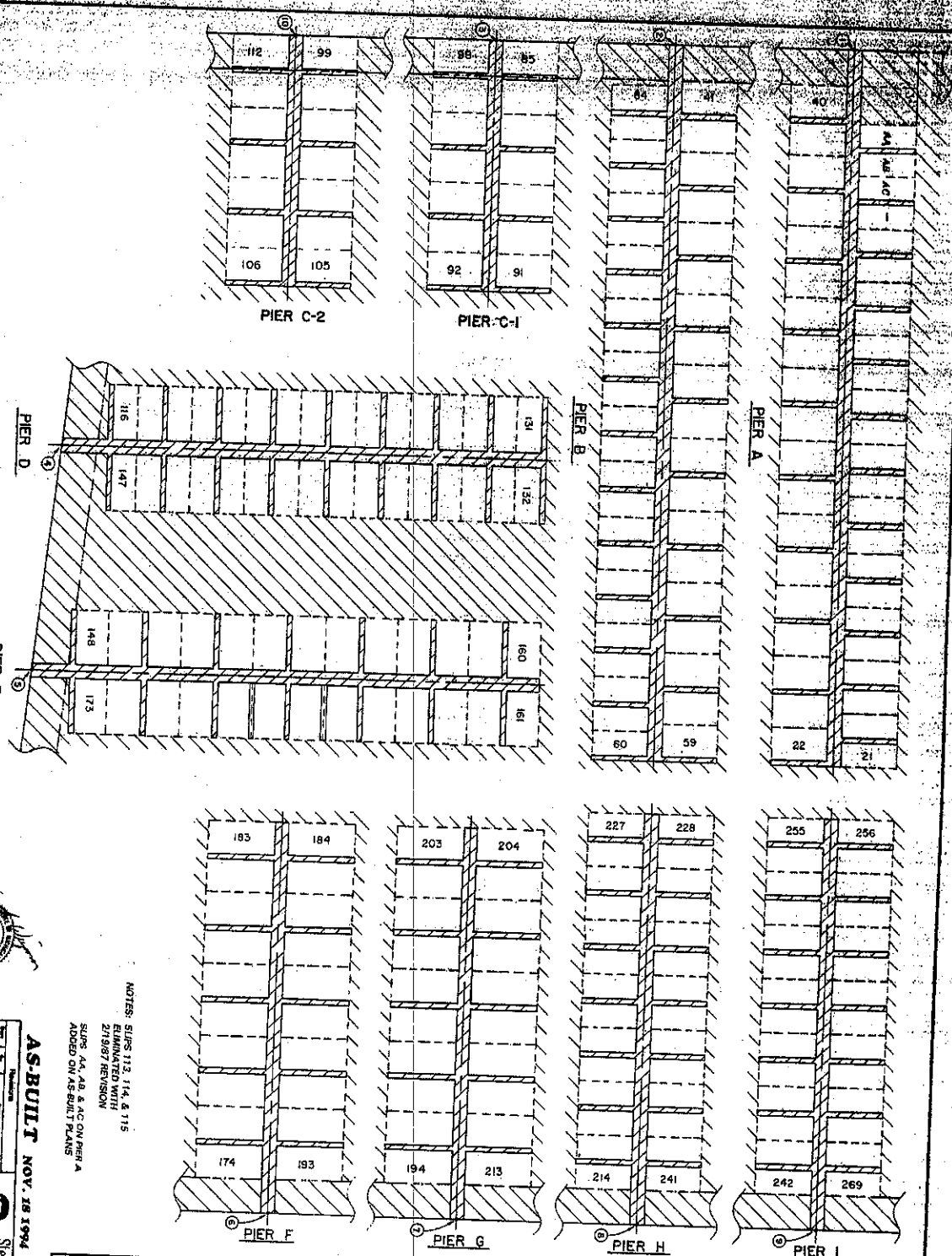
Stephens Consulting Services, P.C.
1501 WEST BAY
NORTHPORT MARINA
SITE PLAN - SLIPS 1-112, 116-200
& AAAB & AC

NOTES: SLIPS 113, 114, & 115
ELIMINATED WITH
27/9/97 REVISION
SLIPS AA, AB & AC ON PERS A
ADDED ON AS-BUILT PLANS



SAGINAW BAY

SITE PLAN



NOTES: SLIPS 113, 114, & 115
ELIMINATED WITH
2/19/87 REVISION
SLIPS AA, AB, & AC ON PIER A
ADDED ON AS-BUILT PLANS

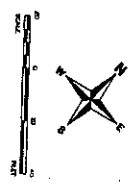


AS-BUILT NOV. 18 1994

Stephens Consulting Services, P.C.
ENGINEERING, SURVEYING, PLANNING
158 NORTH MAIN, 12.000, NEW YORK, N.Y. 10039-3002
TELEPHONE: (212) 512-1000
FAX: (212) 512-1001
PROJECT: **SITE PLAN - SLIPS 1-112, 113-269, & AA, AB & AC**
DATE: OCT. 12, 1994

SCHEDULE OF COORDINATES

COORDINATE POINT	NORTH	EAST
1	6959.88	8027.89
2	6960.44	8027.89
3	6964.88	7876.28
4	6964.12	7846.78
5	6960.37	7902.92
6	6958.47	8178.65
7	6958.47	8536.59
8	6442.57	8422.53
9	6958.16	8422.53
10	6771.94	7800.39



LEGEND

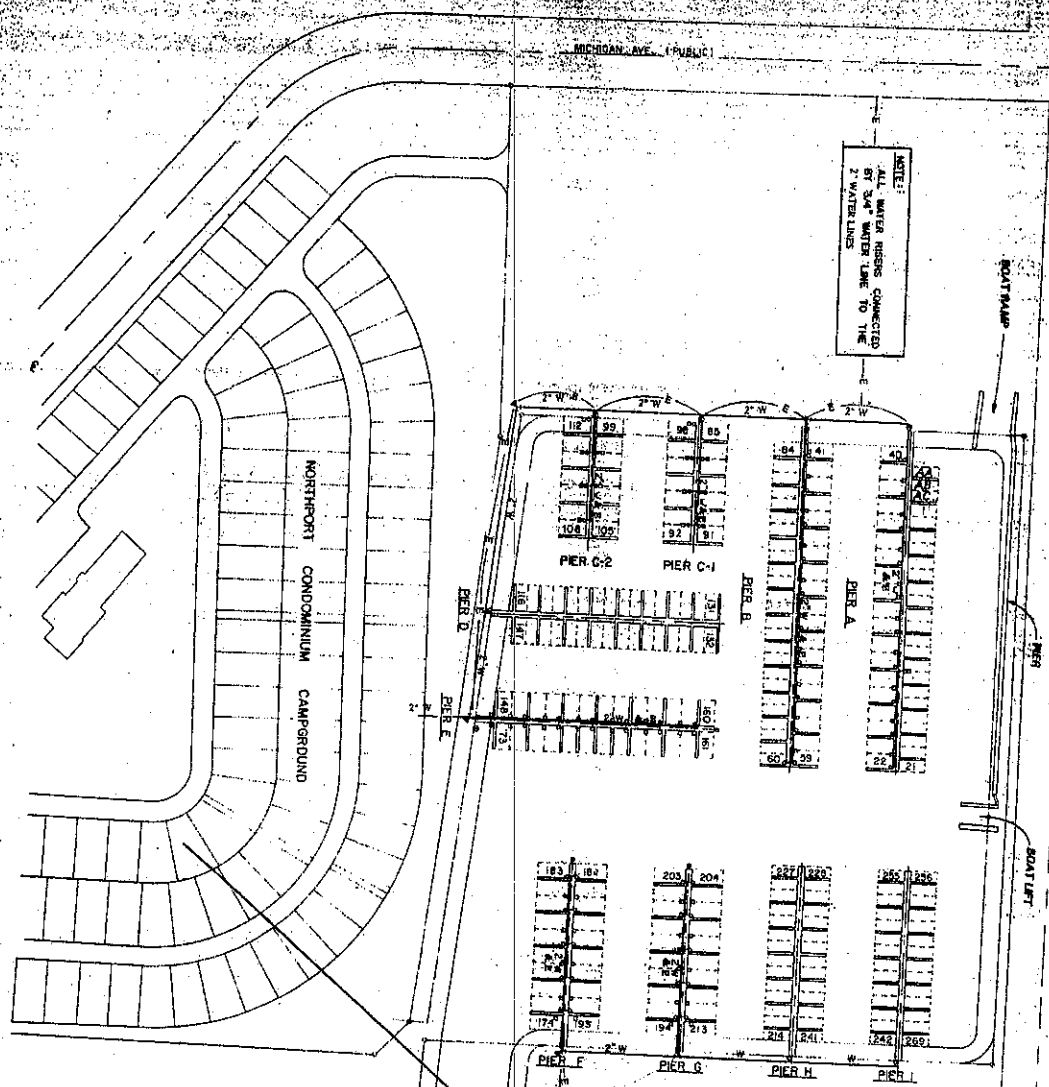
- BEAT SUR BOUNDARY
- BOTTOM EDGE OF PAUL BUSH
- COORDINATE POINT
- GENERAL COMMON ELEMENT
- LIMITED COMMON ELEMENT

SCHEDULE OF COORDINATES

COORDINATE POINT	NORTH	EAST
1	6959.88	8027.89
2	6960.44	8027.89
3	6964.88	7876.28
4	6964.12	7846.78
5	6960.37	7902.92
6	6958.47	8178.65
7	6958.47	8536.59
8	6442.57	8422.53
9	6958.16	8422.53
10	6771.94	7800.39

SEE AS-BUILT SCHEDULE OF COORDINATES BELOW

UTILITY PLAN



NOTES: SUPS 112, 114, & 116
ELIMINATED WITH
2/1987 REVISION
SUPS A, A, AR & AC ON PIER A
ADDED ON AS-BUILT PLANS

WATER AND ELECTRIC LINES ARE RUNG
UNDER RIBS AND GAS LINES ARE RUNG
TO SERVE THE OUTLET SERVICE OTHER
ON PIER A, B, C, D, E, F AND G

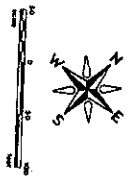
SYMBOL	UTILITY	SOURCE OF INFORMATION
W	WATER	PLANS PROVIDED BY THE OFFICE
M	METAL WATER	"
A	TRUNK BLOCK	"
W	WATER RISER	"
E	ELECTRIC OUTLET	CONSUMERS POWER COMPANY

THE LOCATION OF UNDERGROUND WATER AND
ELECTRIC LINES IS AS PROVIDED BY THE INSTALLER
AND SHOULD NOT BE VERTED IN THE FIELD.

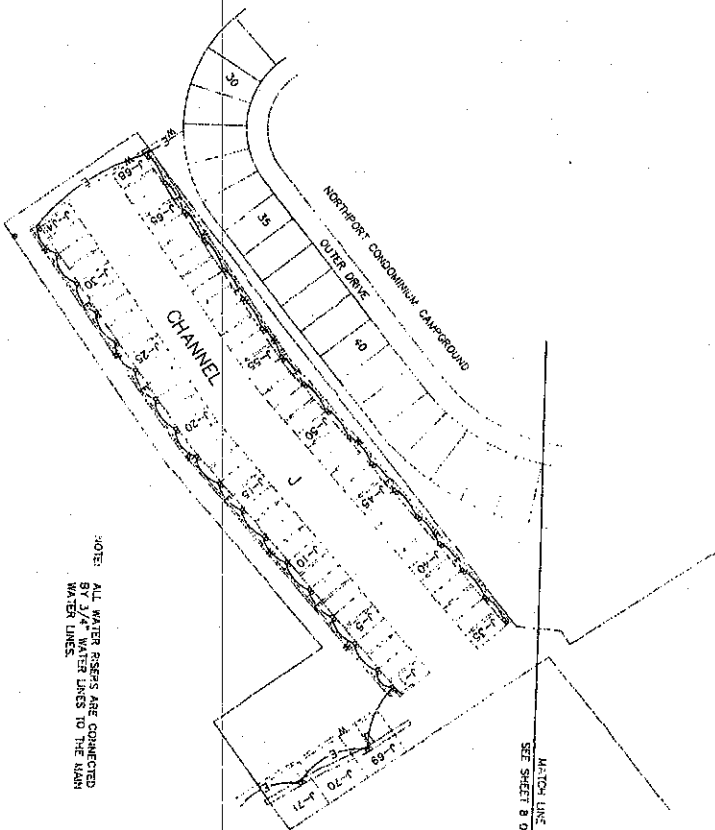


AS-BUILT NOV. 18 1994

Stephen Consulting Services, P.C.
 ENGINEERING - SURVEYING - PLANNING
 150 WEST MAIN ST. 2ND FLOOR
 NORTHPORT MARIANA
 & A.A.B. & A.C.



SAGINAW
BAY



NOTE: ALL WATER RISERS ARE CONNECTED BY WATER LINES TO THE MAIN WATER LINES.

LEGEND

- ELECTRIC LINE
- ELECTRIC RISER
- WATER LINE
- WATER RISER
- WATER VALVE

NOTES: ALL UTILITY RISERS SHOWN HEREON ARE PER FIELD OBSERVATIONS ON 11-16-94. THE LOCATIONS OF ABOVEGROUND WATER AND ELECTRIC LINES IS AS PROVIDED BY THE INSTALLER AND SHOULD BE RECHECKED IN THE FIELD.

AS BUILT: NOVEMBER 19, 1994


Stephens Consulting Services, P.C.
 ENGINEERING, SURVEYING, PLANNING
 518 NORTH MAIN ST. SUITE 200
 WASHINGTON, D.C. 20001-4201

NORTHPORT MARINA
 UTILITY PLAN - SLIPS J1 - J71

